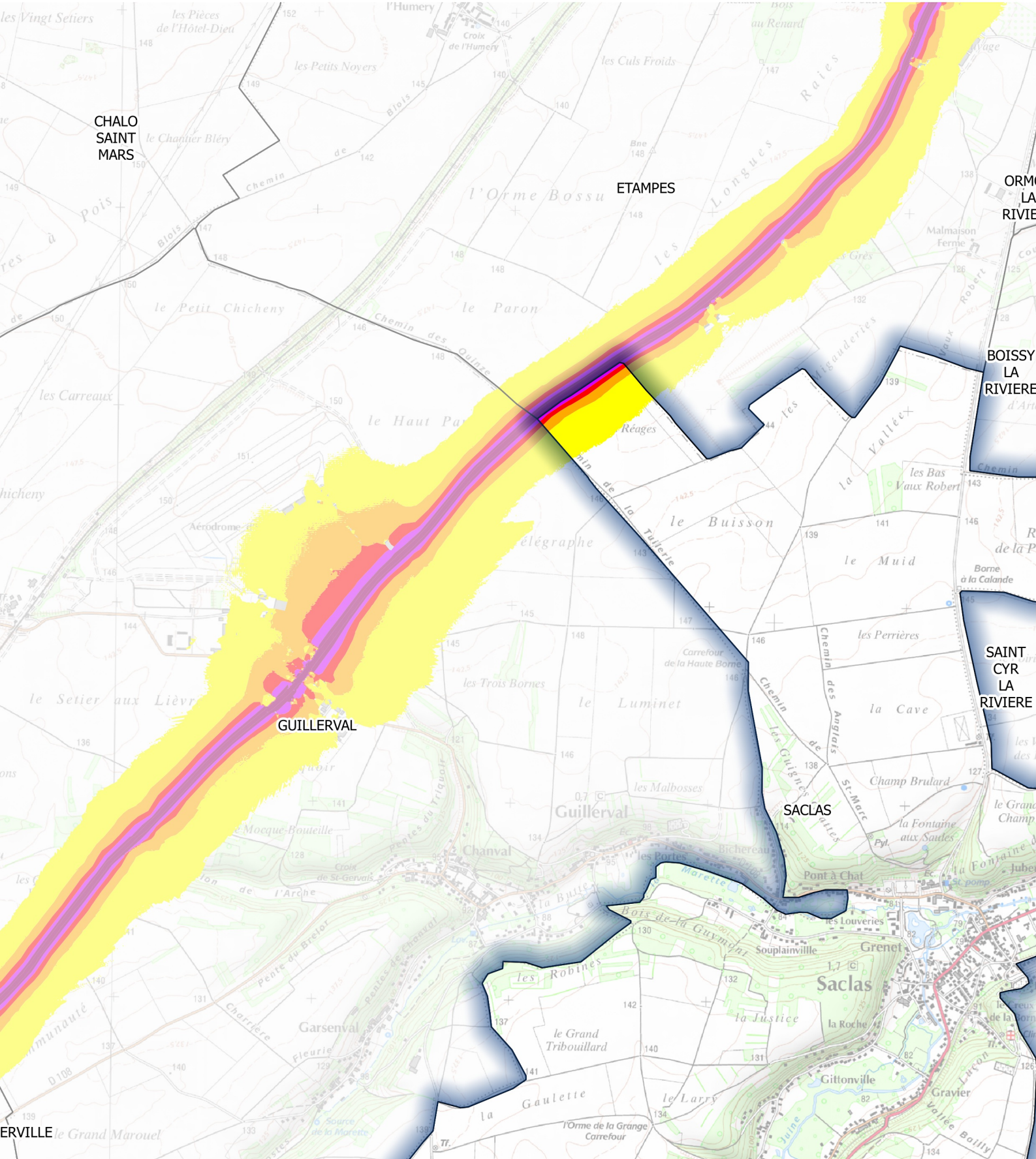





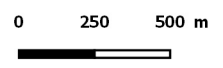


Carte de type A (Lden)
Réseau routier départemental dont le trafic est supérieur à 3 millions de véhicules par an
Estimation du bruit sur 24 heures

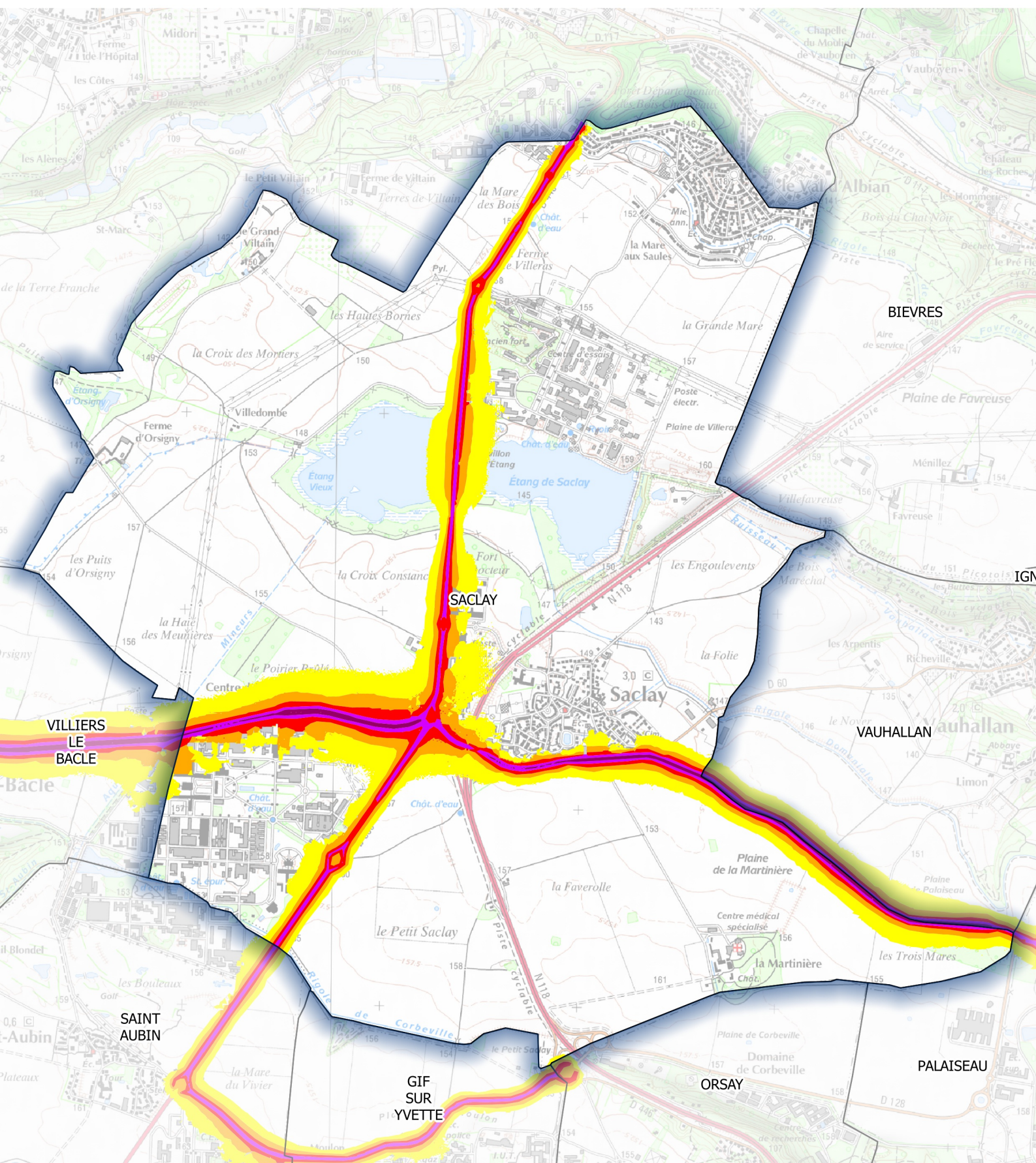
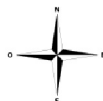


Zones exposées au bruit en dB(A)






	[55-60[
	[60-65[
	[65-70[
	[70-75[
	≥75



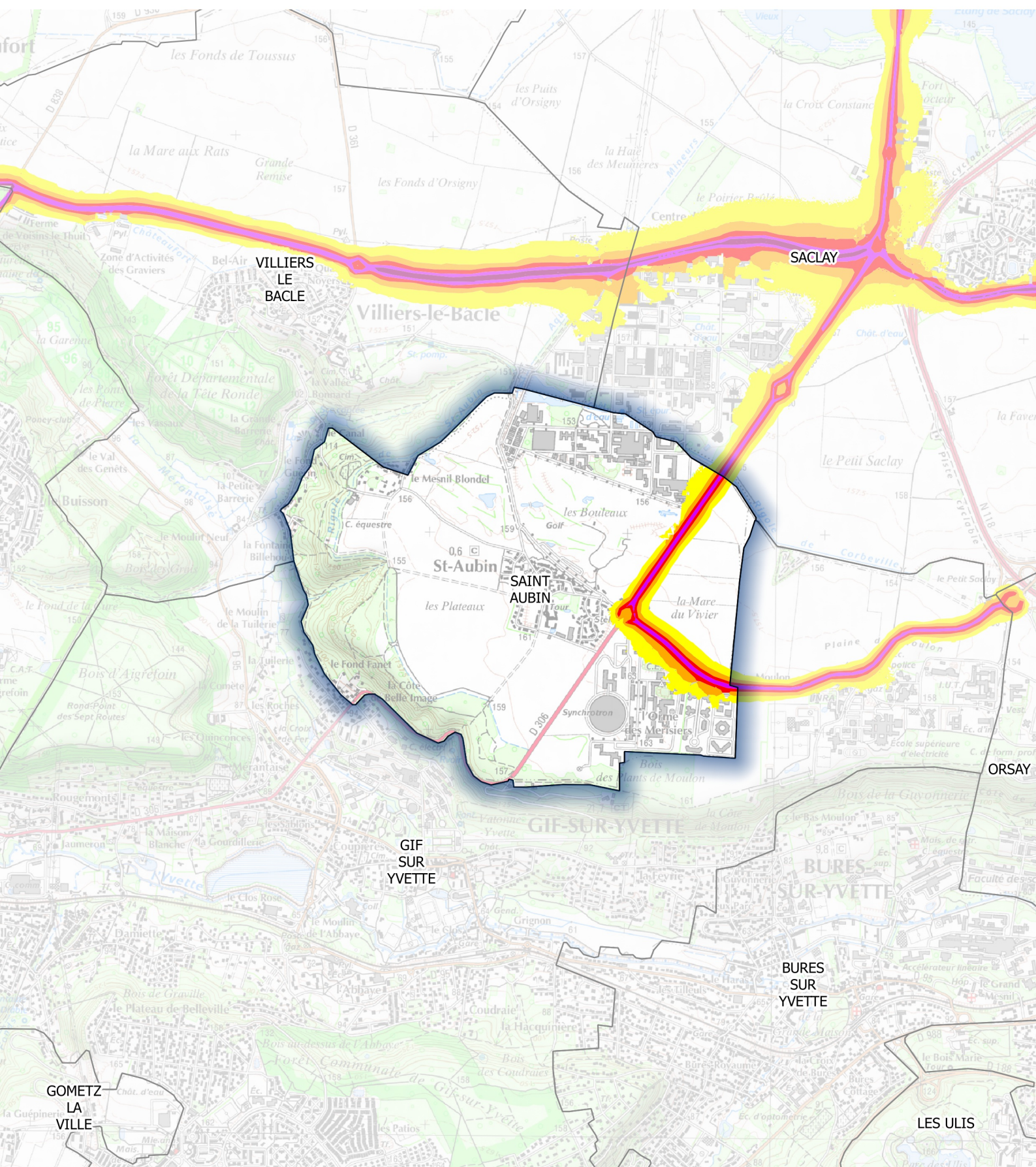
Carte de type A (Lden)
Réseau routier départemental dont le trafic est supérieur à 3 millions de véhicules par an
Estimation du bruit sur 24 heures








Zones exposées au bruit en dB(A)

	[55-60[
	[60-65[
	[65-70[
	[70-75[
	≥75

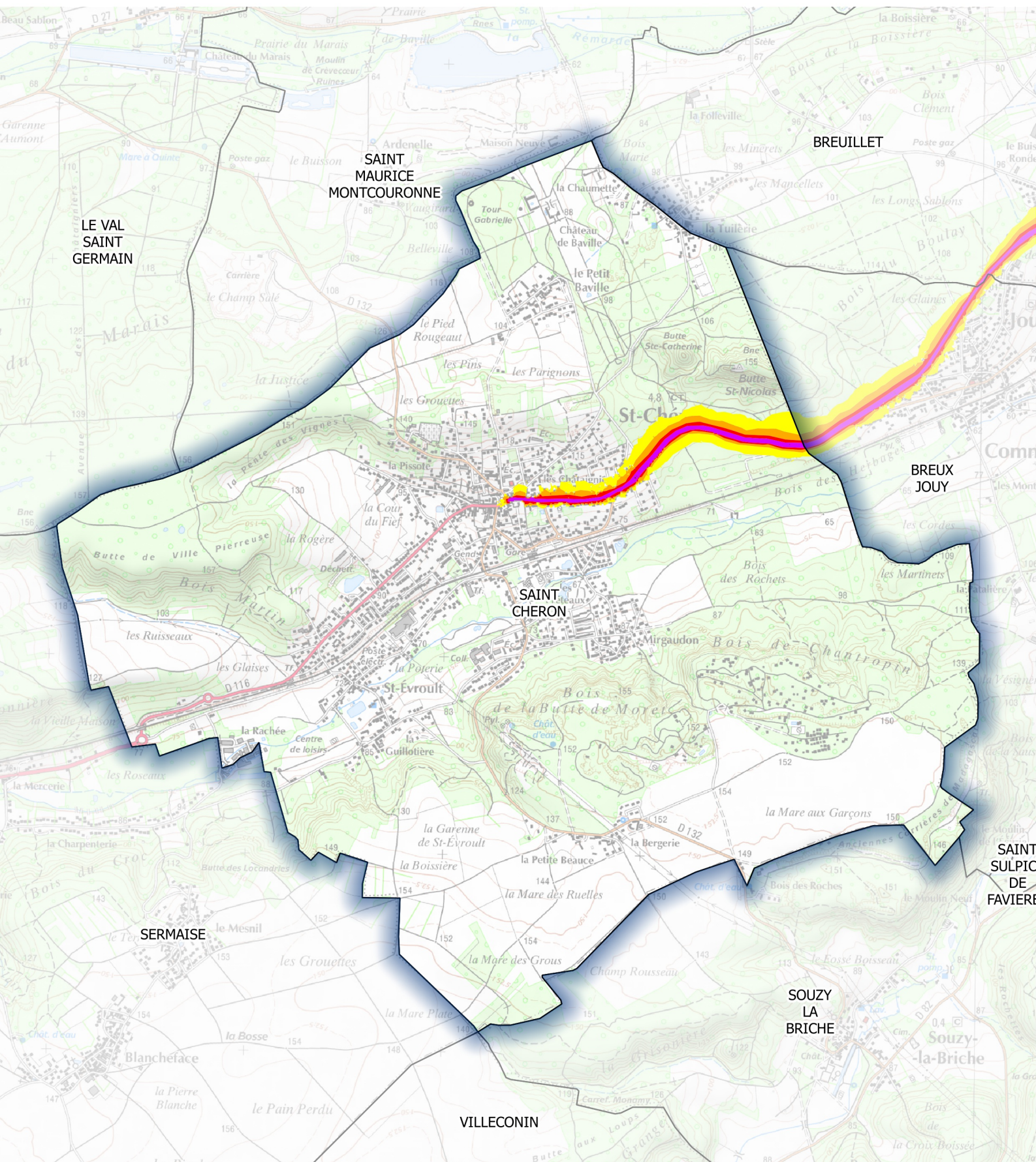
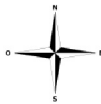
Carte de type A (Lden)
Réseau routier départemental dont le trafic est supérieur à 3 millions de véhicules par an
Estimation du bruit sur 24 heures



Zones exposées au bruit en dB(A)

	[55-60[
	[60-65[
	[65-70[
	[70-75[
	≥75

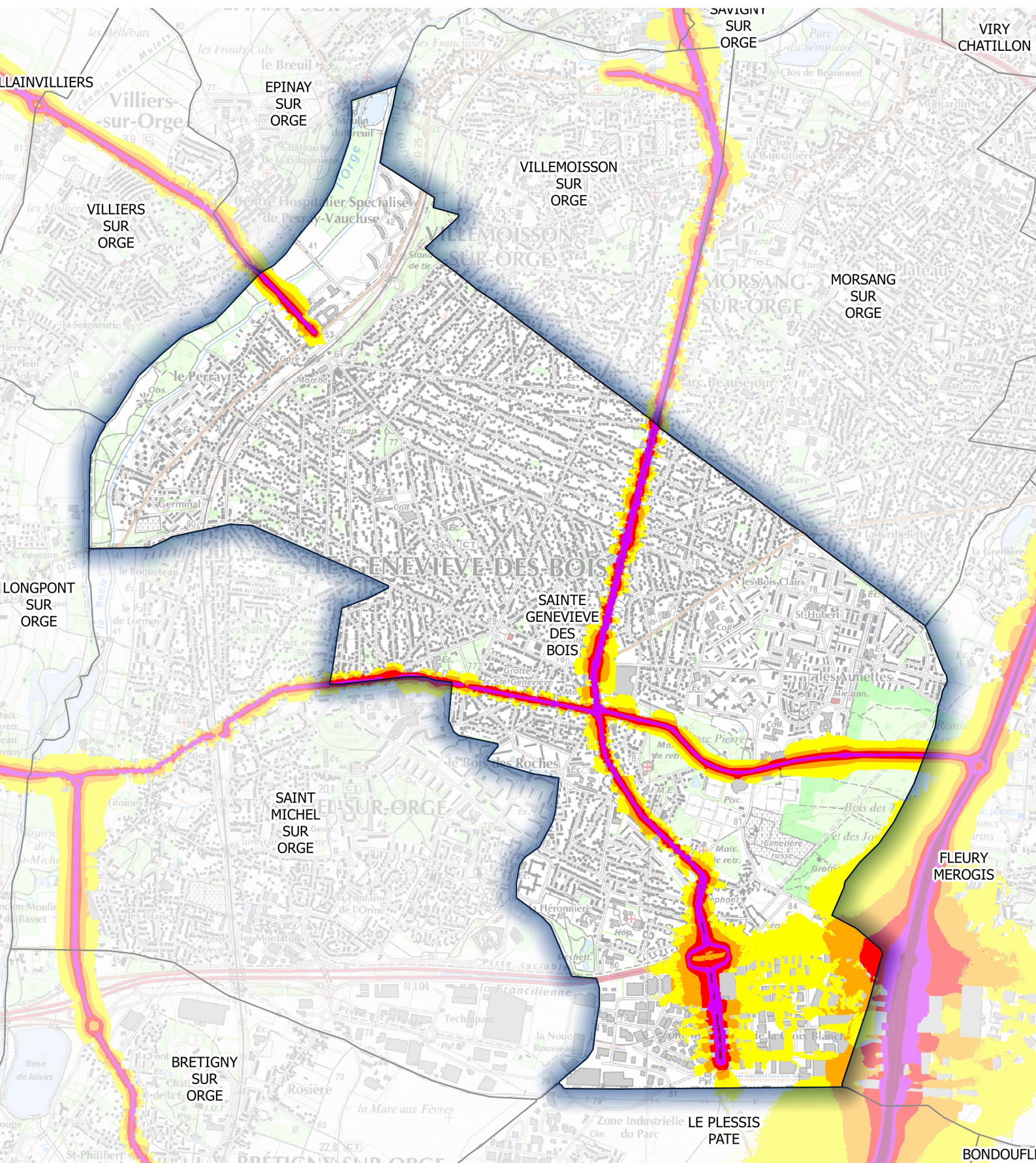
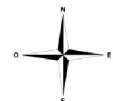
Carte de type A (Lden)
Réseau routier départemental dont le trafic est supérieur à 3 millions de véhicules par an
Estimation du bruit sur 24 heures








Zones exposées au bruit en dB(A)

- [55-60[
- [60-65[
- [65-70[
- [70-75[
- ≥75

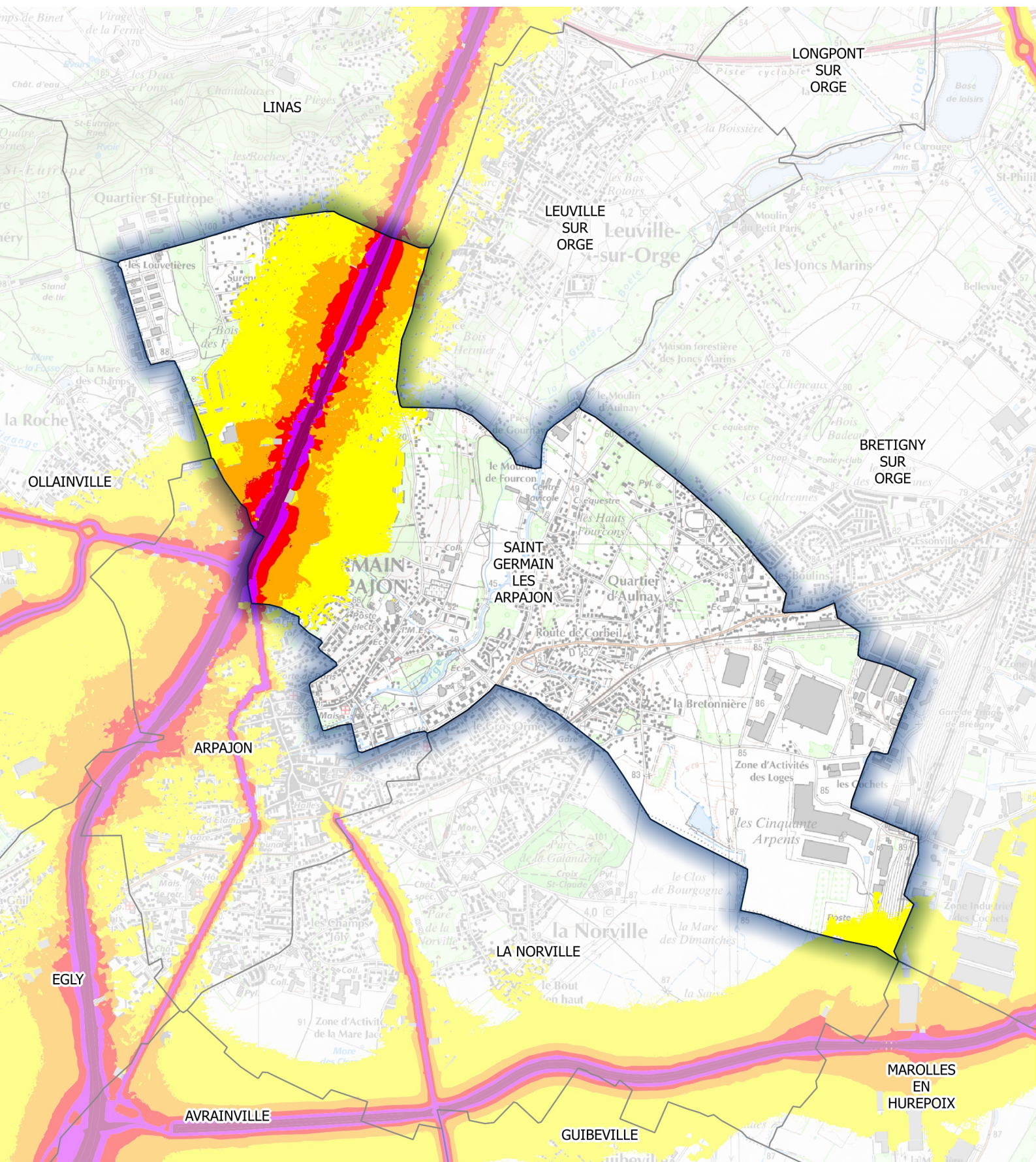
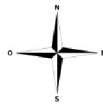
Carte de type A (Lden)
Réseau routier départemental dont le trafic est supérieur à 3 millions de véhicules par an
Estimation du bruit sur 24 heures



Zones exposées au bruit en dB(A)

	[55-60[
	[60-65[
	[65-70[
	[70-75[
	≥75

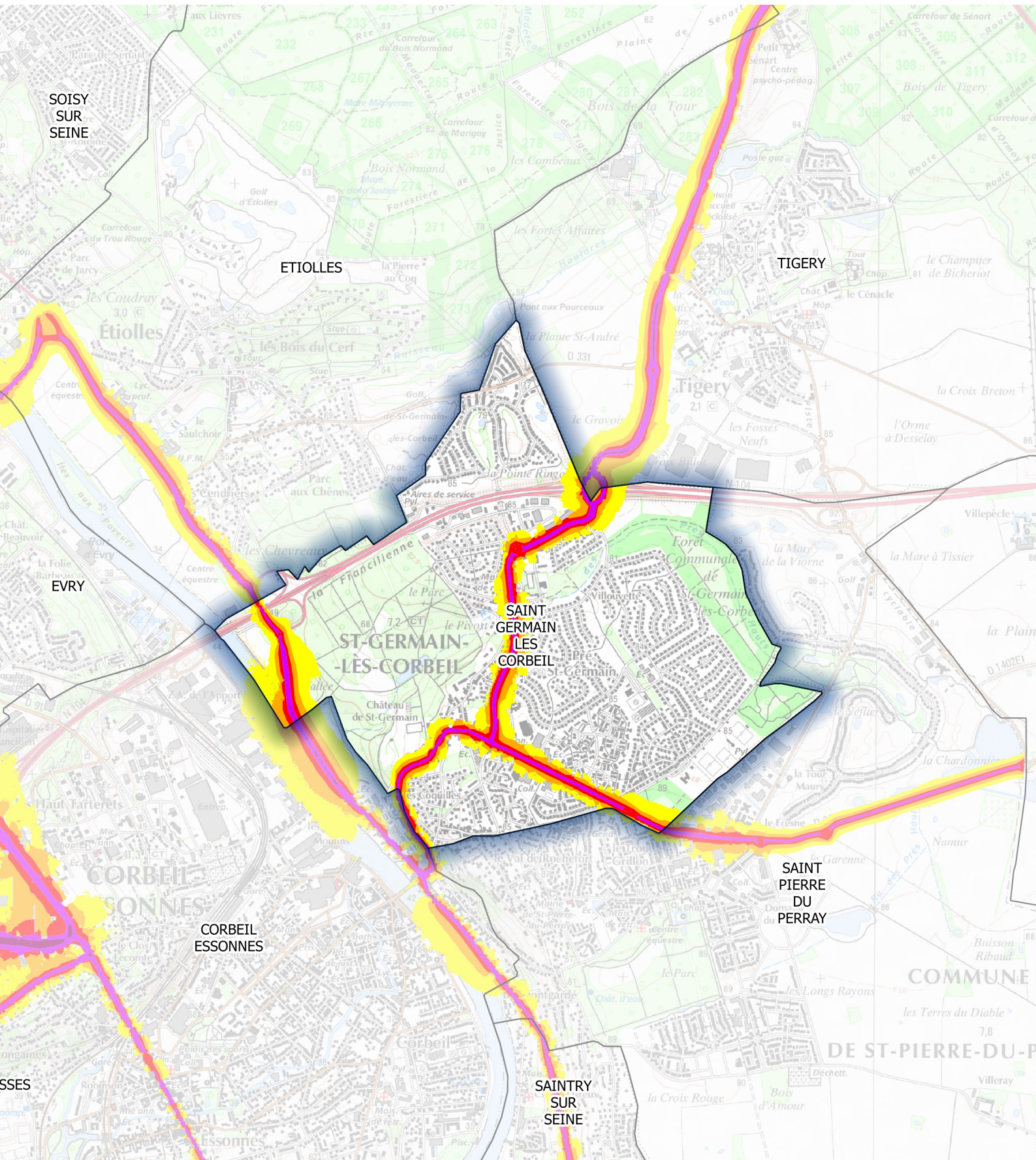
Carte de type A (Lden)
Réseau routier départemental dont le trafic est supérieur à 3 millions de véhicules par an
Estimation du bruit sur 24 heures








Zones exposées au bruit en dB(A)

- [55-60[
- [60-65[
- [65-70[
- [70-75[
- ≥75

Carte de type A (Lden)
Réseau routier départemental dont le trafic est supérieur à 3 millions de véhicules par an
Estimation du bruit sur 24 heures



Zones exposées au bruit en dB(A)

	[55-60[
	[60-65[
	[65-70[
	[70-75[
	≥75